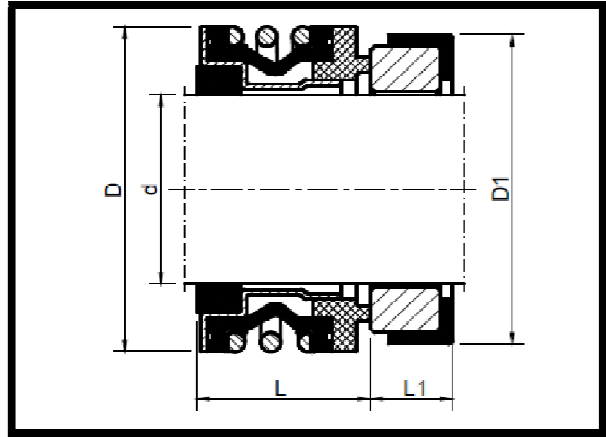


CP6



| CP6 dimensions in (inches) | | | | |
|----------------------------|----------|-----------|------------------|------------|
| Shaft Size (inches) | Head O.D | Seat O.D. | Operating Length | Seat Thick |
| d | D | D1 | L | L1 |
| 0.375a | 0.917 | 0.875 | 0.656 | 0.250 |
| 0.375b | 0.917 | 1.000 | 0.656 | 0.312 |
| 0.4370 | 0.917 | 1.000 | 0.656 | 0.312 |
| 0.500a | 0.917 | 1.000 | 0.656 | 0.250 |
| 0.500b | 0.917 | 1.000 | 0.656 | 0.312 |
| 0.625a | 1.185 | 1.250 | 0.718 | 0.343 |
| 0.625b | 1.185 | 1.187 | 0.718 | 0.406 |
| 0.625c | 1.185 | 1.250 | 0.812 | 0.406 |
| 0.750a | 1.302 | 1.375 | 0.718 | 0.406 |
| 0.750b | 1.302 | 1.375 | 0.812 | 0.406 |
| 0.8750 | 1.429 | 1.500 | 0.812 | 0.406 |
| 1.0000 | 1.552 | 1.625 | 0.812 | 0.437 |

Materials

Seal faces: carbon graphite, silicon carbide, tungsten carbide
Stationary seats: ceramic, Ni-resist, silicon carbide, tungsten carbide
Metal components: AISI 304, 316, 316Ti
Elastomers: NBR, FPM, EPDM

Technical Features

Single seal
Unbalanced
Single spring
Bi-directional
Elastomer bellows
Equivalent to John Crane type 6,
Pac Seal type 16, US Seal type A